



Developing Independence Through Learning

**RUKUHIA SCHOOL**

*E māhi hari kia akonga*

58 Rukuhia Road  
 RD 2, Ohaupo 3882  
 Phone 07 843 6967  
 Fax 07 843 6987  
 Email [office@rukuhia.school.nz](mailto:office@rukuhia.school.nz)  
[www.rukuhia.school.nz](http://www.rukuhia.school.nz)



# Newsletter Term2 Week 3

## KIA ORA

- Assembly is this Friday 17th May at 2.30pm in the Hall
- Pink Shirt Day tomorrow in support of anti-bullying —Gold coin donation to be given to the classroom teacher.
- Our school was the lucky recipient of balls from the Tania Dalton Foundation. The Tania Dalton Foundation has partnered with Rebel Sport and Silver Fern Sport for the Pass it Forward programme. For every Pass it Forward ball sold in a Rebel Sport store an identical ball is donated to the programme and distributed to schools. Thank you Tiana Landon for choosing our school to receive these balls .



## **Morning Drop Off Reminders:**

*To Parents and Caregivers*

*We have noticed an increase in students being dropped off prior, to our School policy of 8.30am. Please ensure you adhere to the policy below.*

*Should children require supervision prior to 8.30am, please contact Lisa at Saved by the Bell.*

### **Morning Drop Off School Policy:**

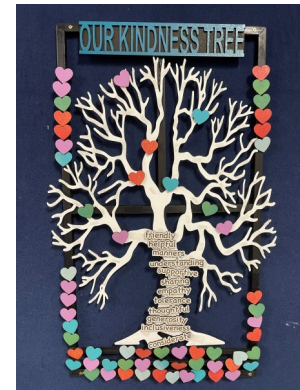
So as to keep our students safe please do not drop children at school **before 8.30am** as we are unable to provide supervision. If you need to drop off before 8.30am we strongly recommend that parents/caregivers make use of the private before and after school facility located next door to the school. A charge applies. This is set by the Before and After School Care providers. Supervision before 8.30am remains the responsibility of the parents/caregivers.

Classrooms will be **open at 8.30am** and we encourage students to be at school between 8.30- 8.45am to prepare for the day.

**Classes start at 9.00am.** It is very disruptive to the morning procedure if children turn up late. To avoid unnecessary disruption to our students learning, please have your children at school **before 9.00am.** If you are late parents/ caregivers are required to sign your child in at the office.

## Thank you to the following students and their whanau for their lovely acts of kindness

- ♦ Thank you to Tyler and gang for putting white lines on the field for our students.
- ♦ A big Thank You to Kyle for creating a Kindness Tree for Room 2
- ♦ Thank you to Beau's Mum, Kirstin, for providing mandarins for the staff and students.



He aroha whakatō  
he aroha ka puta mai  
*If kindness is sown,  
then kindness is what  
you shall receive*



# Important Dates

## Term 2 2024

- ◆ Friday 31st May—Teacher Only Day
- ◆ Monday 3rd June—Kings Birthday
- ◆ Friday 7th June—Winter Sports Ngahinapouri
- ◆ Friday 28th June—Matariki

## 2024 Term Dates

### **Term 1 2024**

Tuesday 30th January—12th April

### **Term 2 2024**

29th April—5th July

### **Term 3 2024**

22nd July—27th September

### **Term 4 2024**

14th October —TBC

# MOE Teacher Only Days

## 2024 dates for teacher-only days

- Following consultation with the Teacher-Only Day Sector Advisory Group, the date ranges for the 2024 TODs have been set as:
  - **Teacher-only day 3:** Term 2 (Mon 27 May – Fri 7 June 2024, includes the King's Birthday long weekend on 3 June)
  - **Teacher-only day 4:** Term 4 (Mon 21 Oct – Fri 15 Nov 2024, includes Labour Day on 28 October and Canterbury Show Day on 15 November – when no NCEA exams are scheduled)
- It is advised that schools liaise with their local Ministry of Education regional office when selecting their teacher-only day. The intention is for neighbouring schools or kāhui to choose the same date to maximise opportunities for collaboration and shared facilitation, while also minimising disruption for parents and whānau.

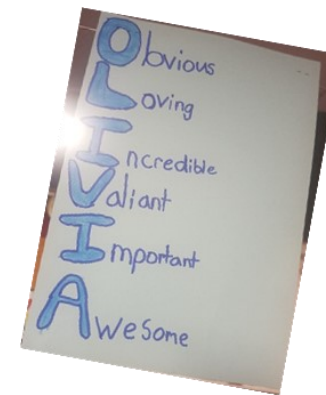
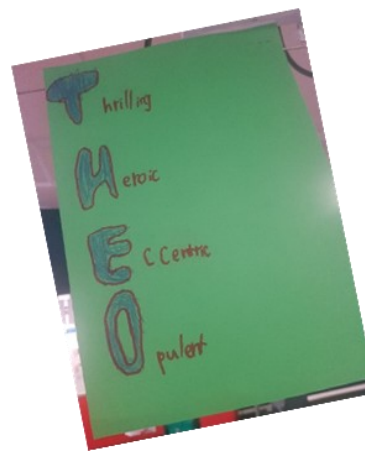
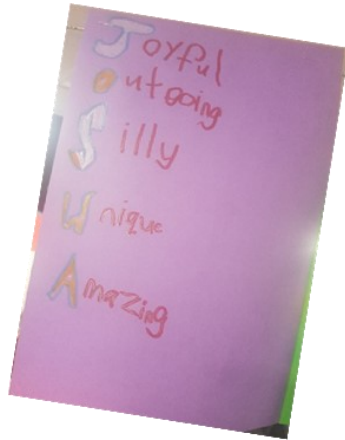
## Rukuhia School Teacher Only Dates:

Term 2 Friday 31st May 2024

Term 4 Friday 25th October 2024

## Week 3 in Room 1

Lately we have been working lots on upgrading the words in our writing. We have made lots of posters of words that have similar meanings (synonyms) so that we can find more interesting words to use in our writing. We have practiced using dictionaries and thesauruses to help us find the meanings of any unknown words. Check out these amazing acrostic poems students made about themselves using our new interesting words...



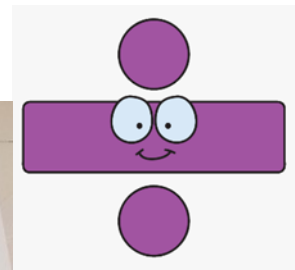
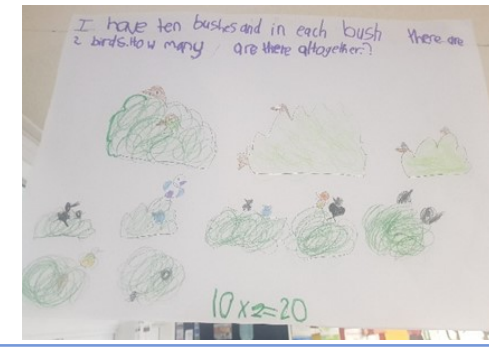
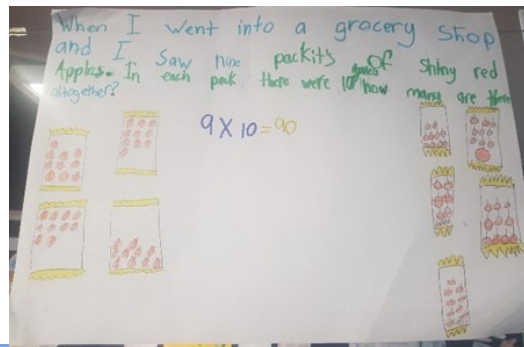
## Room



## Maths

This week we are learning all about division (equal sharing)! We are trying to make links to our 2, 5 and 10 times tables to help us with this. You can support your child at home by continuing to help them practice their 2, 5 and 10 times tables.

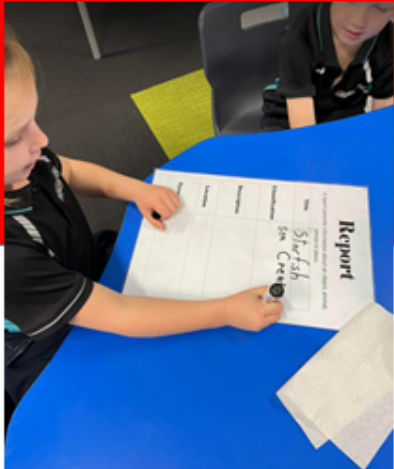
Check out these amazing multiplication stories from last week below...





# ROOM 2

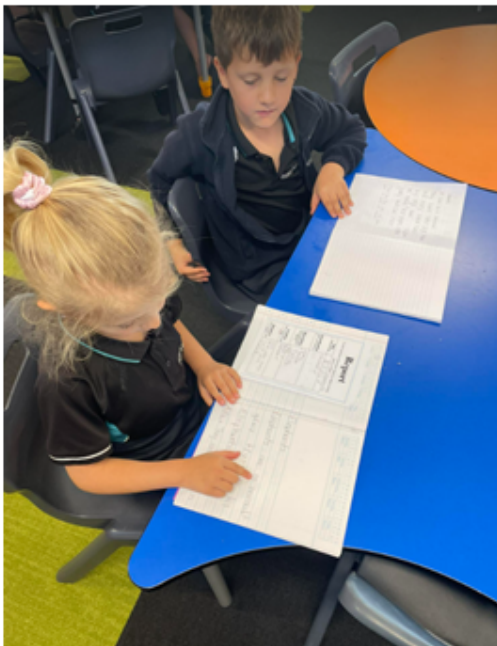
# NEWSLETTER



## A NOTE FROM THE TEACHER...

This term we are learning about football. As you can see from the photos we have been practicing our kicking. We have also spent time learning the rules and expectations when playing sport. In particular sportsmanship and reflection.

We are also beginning to write reports. We started off by planning our reports in pairs about a subject we all know about (starfish). Then we wrote a report together. Room 2 did an amazing job at writing their own report about something they know about. They then taught their buddy, by reading them their report.



## This Week:

Reading	Comprehension
Writing	Report writing
Maths	Subtraction
P.E.	Football
Inquiry	Dolphins

## STAY IN TOUCH:

[Olivia.andrew@rukuhia.school.nz](mailto:Olivia.andrew@rukuhia.school.nz)



# ROOM 3

## CLASS NEWS

### Room 3's routines:

MONDAY

Homework books with their spelling words should come home. These should be practiced during the week.

WEDNESDAY

Library

FRIDAY

Homework books and poem books to school.

### Stay in touch:



Please allow for 24 hours for a response.

leanne.adam@rukuhia.school.nz

### Upcoming learning:

- Writing explanations - Week 4
- Telling time - Week 5
- \_\_\_\_\_
- History of Kirikiriroa
- Matariki
- Kings Birthday
- Waiata Challenge
- Matariki

### This Week:

READING

Reading Comprehension - Reading a selection of fiction and non fiction texts and answering questions using Google Classroom

WRITING

Character Writing of our Superheroes

MATH

Working with fractions

P.E.

Netball Skills and strategies

INQUIRY

History of Kirikiriroa

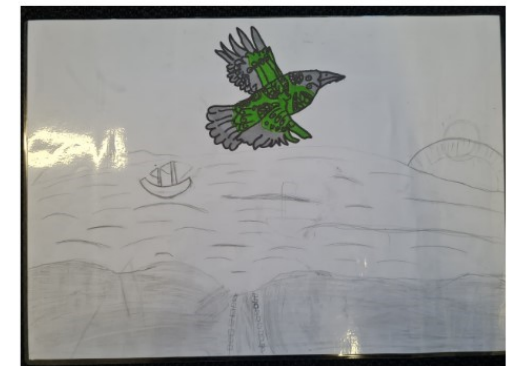
### Quote of the Week:

Ma te whakaharatau ka mātou  
The more we practice, the stronger we get.  
Harold.

# ROOM 4 CLASS NEWS



## INSPIRATION



### A note from the teacher:

Last week the class took on an art project to supplement their Mihi writing. They were challenged to pencil sketch a place that they like to visit with their family and then swap their art style to pop art. With pop art their challenge was to add an animal that they feel would represent themselves / their whanau. We were inspired by the art work to the top right from NZ artist Shane Hansen.

Mrs H



Mrs h

### Upcoming learning:

- Naritve writing
- Winter sports
- Matariki
- Waiata Challenge

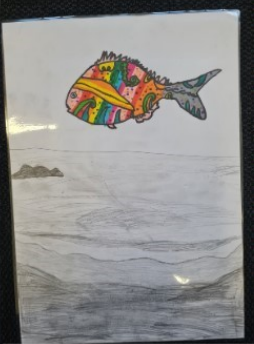
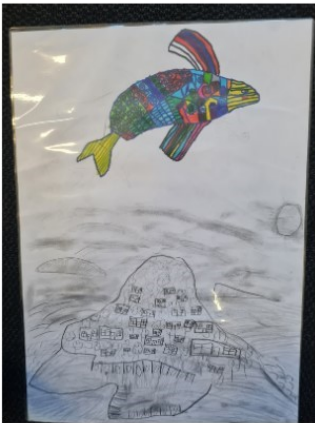
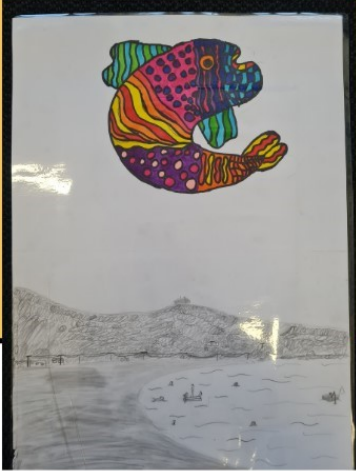
### This Week

READING	Read to: Pax Goal: Building our vocab and discussing hidden meaning in the text.
WRITING	Describing: Character Building (Physical appearance)
MATH	Multiplication Strategies
P.E.	Soccer - Understanding the purpose of holding your position on the field and ball skills
INQUIRY	1981 Springbok tour - Nz / Local History

### Stay in touch :

Please allow for 24 hours for a response.

 tyler.hogg@rukuhia.school.nz



This week up in room 5 we have finished writing our timelines about our lives. We were set the task to evaluate the last 10 years of our lives. We broke this up into 6 month increments. Some children struggled to think of something worth mentioning for each year which we felt was sad. After talking to their parents these children quickly realised their lives weren't so boring.

We have also been writing and creating dioramas on the great book 'White Lies, Maori Legends and Fairytales' which the class has been loving. As a class we broke the entire storyline into main events. We wrote about each event in detail, including a setting description. These descriptions have now been made into physical worlds we can look into. Also known as Dioramas.

These past couple of weeks the room 5 students have been looking into fractions and ratios. Mr J has been teaching the class how to use fractions and ratios for example Room 5 is 1:35 teacher to student ratio. We have been applying this knowledge to real world situations which helps make mathematics relevant to our learning.

This week we would like to bring some attention to a very kind act that someone has done for this school, Tyler commonly known as Mrs Hogg and her family have blessed us by painting white lines on the school field. Room 5 is very grateful for this kind gesture. We think it may have inspired Mr Drury to get behind the passion us Rukuhia kids have for sport, as he has just purchased 2 new football goals. We are very excited about this.

Written by yours truly, Zeke Hollows and Luca Neal





# Room 6

## Kia ora Parents/Whanau

A huge welcome to Avni and her whanau.

Thank you for supporting your child to put his/her book bag into their tote tray each morning. Remember to support your child with their spelling - the list of words is at the front of his/her home learning book. If your child is quick to learn a word then feel free to add a new word or two. I test spelling at the end of each term - students need to be able to write their spelling words not just articulate the spelling of them. Students are also practicing their words at school each day, after lunch plus during our literacy block. We have had lots of fun discussing and acting out stories this week - one of them being: 'In the Beginning'. Ask your child about Papatuanuku and Ranginui. The students have learnt some interesting vocabulary, such as, heave, cramped, apart, strained,, uncultivated.

Please feel free contact me if you are concerned about your child's learning - [jane.coles@rukuhia.school.nz](mailto:jane.coles@rukuhia.school.nz)

## Curriculum Focus this week:

- ⇒ Reading - who/where/when/why
- ⇒ Writing - recount/character description/poem response
- ⇒ Maths - numbers before and after to 20 with an emphasis on teen numbers
- ⇒ Social Sciences - Maori Legends & Narratives
- ⇒ Health & PE - large ball skills and games including soccer/basketball
- ⇒ The Arts - drawing skills. Creating Papatuanuku and Tane-Mahuta

Letters for Week  
3: e n o d g

Word Family for Week  
3: am/lamb

Letters for Week  
4: l v y j h

Word Family for Week  
4: hen/men



# Waipa Animal Control

Waipa animal control have asked us to reach out to our community who might be considering adding a dog to their family.

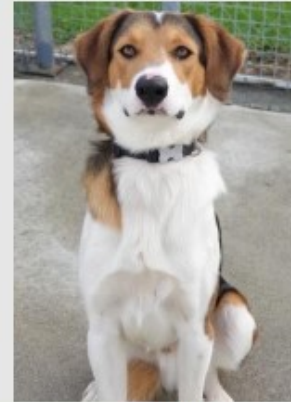
If you are interested in getting a forever pet please look through their facebook page as well.

All dogs must be rehomed to securely fenced properties, and new owners must be prepared to register and micro-chip the dog, and also to vaccinate and desex (if not already desexed).

<https://www.facebook.com/WaipAnimalControl/>

## Urgent Dog Rescue

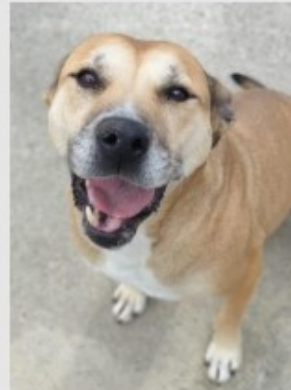
Help! Please ... can you give a dog a home? All here are in urgent need of a home.



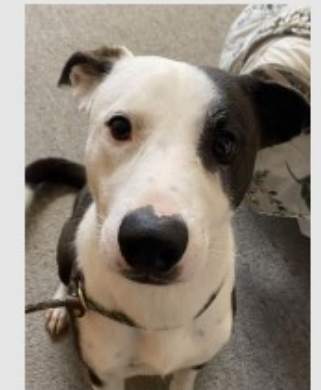
Introducing "Hank": Huntaway x, Long legs, athletic, smart, fast, super-social. Would love a doggy sister to play with and day-time company. Could you keep up with Hank?



Introducing "Martin": Huntaway x pup, approx 4-5 months male. Quiet, fun, bouncy. Bad start to life, now needs some good things.



Introducing "Meg": Mixed breed, mature, female. Lovely nature. Needs a kind owner.



Introducing "Moss": Heading Dog x, young male. Smart, biddable, sensitive. Needs daily exercise, training and fun.

For more information, or if you can offer any of these beautiful dogs a forever home, please contact:

Helen M or Linda  
0800 924 723, mobile 027 584 7073 or  
[aco@waipadc.govt.nz](mailto:aco@waipadc.govt.nz)

**New owners must be prepared to register, micro-chip, vaccinate and desex the dog. And property must be fenced to dog-proof standard.**

**You can't change the world by adopting an animal, but you can change the whole world for that animal.**



Dear Parents/Guardians,

We are delighted to inform you that Rukuhia School will be participating in the world-renowned ICAS competition this year.

**What is ICAS?**

ICAS is an online academic competition that is designed to assess students' higher order thinking and problem-solving skills in English, Mathematics, Science, Writing, Spelling Bee and Digital Technologies.

Each assessment celebrates students' accomplishments by providing opportunities for recognition and development. Every student who participates will receive a printed certificate and an online results report. Top performers will be eligible for medals.

We encourage you to consider entering your child into ICAS this year.

**Access details for parents**

**Our school access code is:** EMN431

**Our parent page link is:** <https://shop.icasassessments.com/pages/pps>

**ICAS will close for orders on 29th July 2024**



# Parent Payment System

## How to buy ICAS tests for your child.

If your school has signed up to the Parent Payment System (PPS), follow these **4 easy steps** to purchase the right tests for your child.



1

**KEEP**

the "access code" that your school gives you to use the PPS handy.

2

**VISIT**

[shop.icasassessments.com/pages/pps](https://shop.icasassessments.com/pages/pps) and enter your school's access code.

3

**ENTER**

your child's details and select the subjects you wish to purchase.

4

**PAY**

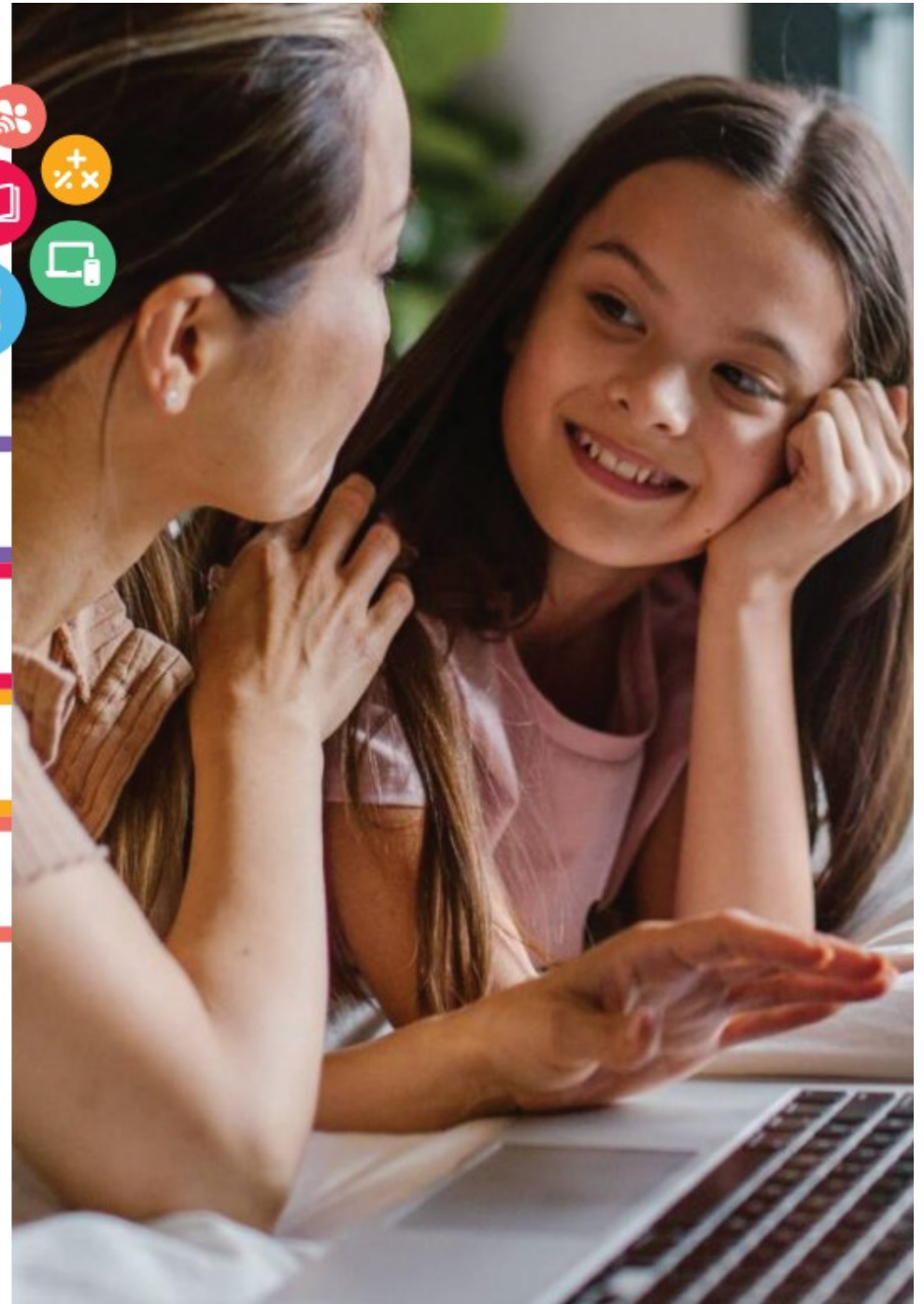
using your credit or debit card. This is the most secure way to pay.

### What happens next?

Your child's school will run ICAS from here. In the meantime, you can purchase practice materials from the ICAS Assessments shop <https://www.icasassessments.com/shop-parents/>

Your school will notify you when online results are ready and will send the certificate home with your child.

**ICAS**  
assessments



# School Reminders

## School Times

8.30am	Classrooms Open
9.00am	School Starts
11.00-11.30am	Morning Tea
12.45-1.40pm	Lunch
3.00pm	School Finishes

## Office Hours

8.30am—3.00pm  
office@rukuhia.school.nz  
07 843 6967

## Absentees

If your child is going to be absent from school for any reason, could you please call or email the office before 9.00am. If the phone is unattended please leave a message.

## Signing In & Out

If you are late for school or need to take your children out of school for any reason during school time, **parents/caregivers must** come into the office and sign them out and then sign them back in if they are returning before school finishes.

## School Bank Account

If you are wanting to make online payments to the school below are our bank account details:

12 3152 0019783 00

Please make sure you note the child's name and what the payment is for.

The logo for Rukuhia School is a stylized green shape with a black outline, resembling a leaf or a banner, set against a light blue background with green hills. The text "RUKUHIA SCHOOL" is written in white, bold, uppercase letters across the green shape.

**RUKUHIA SCHOOL**

# Uniform Supplier

**Logo U2 are now able to offer your school uniform to be ordered directly from their online shop**

[www.logou2.com](http://www.logou2.com)

- A note from Logo U2: Please wash our shirts inside out. When printed apparel is turned inside out when washing the printing will last longer as it is not getting rubbed against other clothing.



**Logo U2**  
Proudly NZ

