



Newsletter Term2 Week 5



- Assembly is on this **Thursday, 30th May** at 2.30pm in the Hall
- **Reminder:**
School is closed for instruction on this Friday, 31st May for a Teacher only day and on Monday 3rd June for Kings Birthday. I hope you all have a safe and Happy long weekend.
- ICAS registrations must be in by or before 29th of July. Further information is later in the newsletter.
- If you have lost a fleece I still have a lot of unnamed, unclaimed, fleeces in lost property. Please ensure all uniform items are named, so they can be returned.
- **New Enrolments:**
If you know of any families in the area that have children that will be attending Rukuhia school , can you please encourage them to come into the office to register, sooner rather than later. This assists us with upcoming numbers.

Morning Drop Off Reminders:

To Parents and Caregivers

We have noticed an increase in students being dropped off prior, to our School policy of 8.30am. Please ensure you adhere to the policy below.

Should children require supervision prior to 8.30am, please contact Lisa at Saved by the Bell.

Morning Drop Off School Policy:

So as to keep our students safe please do not drop children at school **before 8.30am** as we are unable to provide supervision. If you need to drop off before 8.30am we strongly recommend that parents/caregivers make use of the private before and after school facility located next door to the school. A charge applies. This is set by the Before and After School Care providers. Supervision before 8.30am remains the responsibility of the parents/caregivers.

Classrooms will be **open at 8.30am** and we encourage students to be at school between 8.30- 8.45am to prepare for the day.

Classes start at 9.00am. It is very disruptive to the morning procedure if children turn up late. To avoid unnecessary disruption to our students learning, please have your children at school **before 9.00am.** If you are late parents/ caregivers are required to sign your child in at the office.

Pink Shirt Day

We had an amazing turn out for Pink Shirt Day. With all proceeds going directly to the charity.

Thank you to all that got involved and all that made a donation.



Thank you to the following students and their whanau for their lovely acts of kindness

- ♦ Massive thank you to all Room 5 students who cleared, sorted, and re stacked the entire shipping container.
- ♦ Cove Ringia making it his personal message to high five every child in the school.
- ♦ Lisa Giffy coming into school during lunches to practice netball with our netball teams.
- ♦ Beau's family for donating games to Room 2.
- ♦ Thank you to Toby for donating his toy digger to Room 6.
- ♦ A Huge thank you to Terry, our neighbour for spraying the native bush area and garden area. We really appreciate you giving up your time.
- ♦ **Thank you to Restore Native**, 454 Aspin Road, Te Miro, Cambridge, for donating 100 native seedlings for our school native bush area. Every school student will be planting one tree leading up to Matariki. Any past pupil (of any age) is welcome to plant a tree too, or we can do it for you - just let Jane know.
jane.coles@rukuhia.school.nz



He aroha whakatō
he aroha ka puta mai
*If kindness is sown,
then kindness is what
you shall receive*



Important Dates

Term 2 2024

- ◆ Friday 31st May—Teacher Only Day
- ◆ Monday 3rd June—Kings Birthday
- ◆ Friday 7th June—Winter Sports Ngahinapouri
- ◆ Wednesday 12th– Friday 14th June—Fieldays, you can do an early pickup of 2.45 on these days to avoid excessive traffic around 3pm.
- ◆ Friday 28th June—Matariki

2024 Term Dates

Term 1 2024

Tuesday 30th January—12th April

Term 2 2024

29th April—5th July

Term 3 2024

22nd July—27th September

Term 4 2024

14th October —TBC

2024 Fieldays

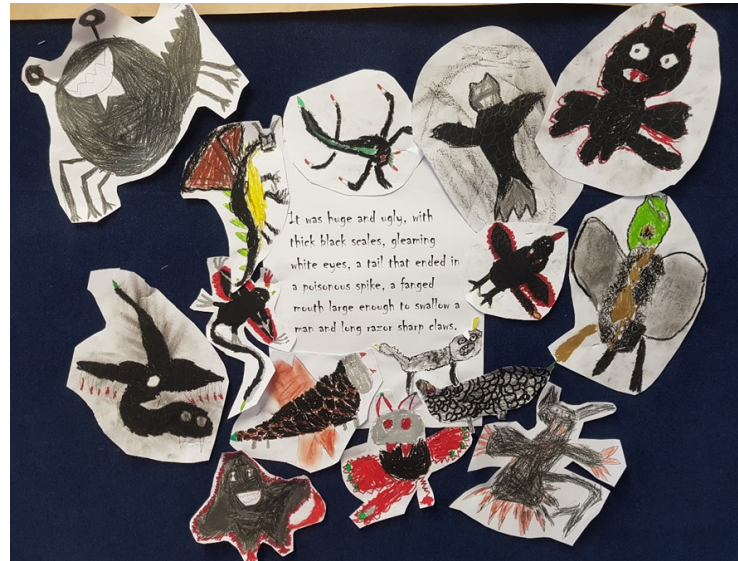
12th-14th June

Due to a heavy traffic volume around the 3pm pick up time caused by the Fieldays, you are welcome to do your pick up from 2.45 on:

Wednesday 12th to Friday 14th June



Week 5



The students in Room 1 have been enjoying using their visualisation skills to bring to life moments from our Ickabog story. Enjoy one of our latest creations from a moment in the story.

P. E

In the afternoons, we have been practicing our soccer skills. Some skills we have been practicing are dribbling, passing and stopping the ball. It has been amazing to see everyone's skills developing. We are now working on playing as part of team to score goals in a soccer game.

Room



ROOM 2 NEWSLETTER

A NOTE FROM THE TEACHER...

We celebrated pink shirt day in Room 2 back in week 3. Room 2 made some amazing posters, sharing kind messages and affirmations, for people walking past our classroom. We discussed the importance of being kind to others and ourselves.

In our class we do Independent reading every day. This is an opportunity for the children to find a book from our classroom library that sparks joy for them. As well as some quiet time to practice reading fluency.

I was absolutely blown away with the effort Room 2 put into our art project this week. Check out how cool our seahorses look! Alongside this we wrote excellent reports full of interesting information about seahorses.

This Week:

Reading	Fluency
Writing	Report writing
Maths	Geometry
P.E.	Football
Inquiry	Seahorses

STAY IN TOUCH:

Olivia.andrew@rukuhia.school.nz



Room 3 - Class News

Respect

We are discussing what respect looks like in class, around school, with our friends & with our classmates. We acknowledge that respect looks different to everyone. What's it like in your home?

Routines

Monday - Homework books with spelling words come home. These should be practiced during the week.

Wednesday - Library Day

Friday - Homework books and poem books to school

Upcoming Learning

Writing Explanations
Finishing fractions

History of Kirikiriroa
Kings Birthday
Matariki
Waiata Challenge

Quote for the week

Manaaki mai
Manaaki atu
Manaaki i te taiao
Respect Self
Respect Others
Respect the Environment

Stay in touch

Please allow 24 hours for a response.
leanne.adam@rukuhia.school.nz

This fortnight

Reading Reading Comprehension focussing on non fiction text

Writing Writing information reports

Maths Finishing fractions and starting time

P.E. Netball skills and game play

Inquiry

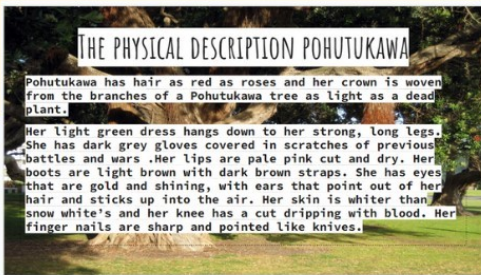
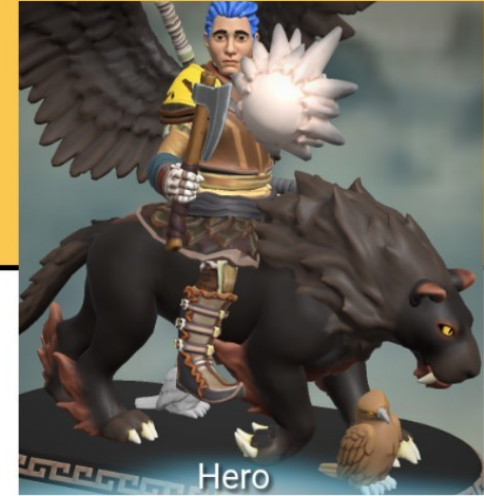
For the remainder of the term, we are looking at the history of Kirikiriroa / Hamilton.

The students will be asking questions about our city as homework tasks as well as completing research in class.

Keep an eye out in their homework books or on google classroom.

ROOM 4

CLASS NEWS



A note from the teacher:

Over the past few weeks, our class has learned about the Matariki stars and what each star represents. For example:
 Tupuārangī: Linked to food that comes from the sky, including birds and other forms of sustenance from the air. It highlights the importance of the forest and the birds.

The students were asked to choose one of the nine stars and create a character or hero to represent this star. They used a computer program to design its look and then developed three slides to describe their characters:

1. The first slide: physical description.
2. The second slide: their traits.
3. The third slide: the character's home.

Please see the surrounding examples of different students' work, they blow me away with their creativity!

Mrs H



Upcoming learning:

- Narrative writing
- Winter sports
- Matariki
- Waiata Challenge

Scene Description

My Matariki star lives in the sky with all of her friends and makes all their wishes come true. In the sky there's a cloud, and on that cloud there is small little cottage she built it herself. She is really proud of it. You can see a smooth floor and hear music that you can dance to. It's sometimes gloomy there because she is alone, but, it is nice and you can smell sweet, sweet, strawberries.

Physical

Pohutukawa has green skin with a tint of yellow, eyes like a reptile and blood on her nose. Pohutukawa is muscular and strong like a bodybuilder. Her legs are infected with mold and sickness and Pohutukawa's hair is messy with rats roaming around her head.



This Week

CLASS READING	Read to: Pax Goal: Finishing the story and applying our knowledge from the start of the year of Te Whare Tapu Wha to access how the main characters' lives has changed.
WRITING	Describing: Character Building (Character Traits)
MATH	Division Strategies - Using our multiplication facts and algorithm
GROUP READING	Identifying if a text is fiction or non-fiction, they have been given some tricky texts that could be somewhere in between. The answer will depend on the quality of evidence they use to justify their idea.
INQUIRY	1981 Springbok tour - Nz / Local History

Stay in touch :

Please allow for 24 hours for a response.



tyler.hogg@rukukia.school.nz

Behaviour

My character is a very confident and adventurous person. My hero can be graceful and calm by speaking gently and kindly. When she is angry, she is vicious, she walks dramatically, does not slouch, and speaks loud and rude.

ROOM 5 NEWSLETTER

"My door is always open"
steve.jepsen@rukuhia.school.nz



This Week in Room 5

Students have begun their inquiry study on Ai (Artificial Intelligence) this week. They have been discussing what it is exactly, how it can and is being used, along with the complications we may face in the near future. Students are very excited to explore the tools available and truly push these to their limits.

Common denominators, uncommon denominators, adding improper fractions, and everything in between is what the students of Room 5 have been learning about in Maths. Its been great to see the students apply this new learning to their testing this term.

With the Interschools Winter Sports Day hot on our tails our focus over the next few weeks will be on both Netball and Football. Student led activities based around ball skills and defense will be our main focus.

School Camp has been announced and we are all super excited to see what Camp Raglan has to offer. You can all expect to see some incredible student led fund raising projects over the next few months to help the students raise money for their camp.

Thanks for reading!

Room 6

Kia ora Parents/Whanau

Last week I had the pleasure to listen to some children read independently and to analyse their reading skills. Wow! Room 6 has some incredible readers! It is so important that your child reads everyday at home as this supports our class reading programme. When students turn 6 years of age they should be around Level 14. Thank you for continuing to support your child with learning List 1 and List 2 spelling words. Remember I will test your child on these words at the end of term.

Room 6 students enjoyed seeing Room 2 students with their seahorse artwork. Room 2 students shared their awesome knowledge about seahorses, and Room 6 students asked them some very interesting questions.

Just a reminder to keep home toys at home please. I have noticed some little cars appearing in pockets.

Please feel free contact me if you are concerned about your child's learning - jane.coles@rukuhia.school.nz

Curriculum Focus this week:

- ⇒ Reading - who/where/when/why
- ⇒ Writing - recount/character description/poem response
- ⇒ Maths - addition and subtraction
- ⇒ Social Sciences - Maori Legends & Narratives
- ⇒ Health & PE - large ball skills and games including soccer/basketball
- ⇒ The Arts - drawing skills. Creating Tāwhirimātea

Letters for Week

5: q u z r u

Word Family for Week

5: in/pin

Letters for Week

6: x w m s f

Word Family for Week

6: dad/had





Dear Parents/Guardians,

We are delighted to inform you that Rukuhia School will be participating in the world-renowned ICAS competition this year.

What is ICAS?

ICAS is an online academic competition that is designed to assess students' higher order thinking and problem-solving skills in English, Mathematics, Science, Writing, Spelling Bee and Digital Technologies.

Each assessment celebrates students' accomplishments by providing opportunities for recognition and development. Every student who participates will receive a printed certificate and an online results report. Top performers will be eligible for medals.

We encourage you to consider entering your child into ICAS this year.

Access details for parents

Our school access code is: EMN431

Our parent page link is: <https://shop.icasassessments.com/pages/pps>

ICAS will close for orders on 29th July 2024

Parent Payment System

How to buy ICAS tests for your child.

If your school has signed up to the Parent Payment System (PPS), follow these **4 easy steps** to purchase the right tests for your child.



1

KEEP

the "access code" that your school gives you to use the PPS handy.

2

VISIT

shop.icasassessments.com/pages/pps and enter your school's access code.

3

ENTER

your child's details and select the subjects you wish to purchase.

4

PAY

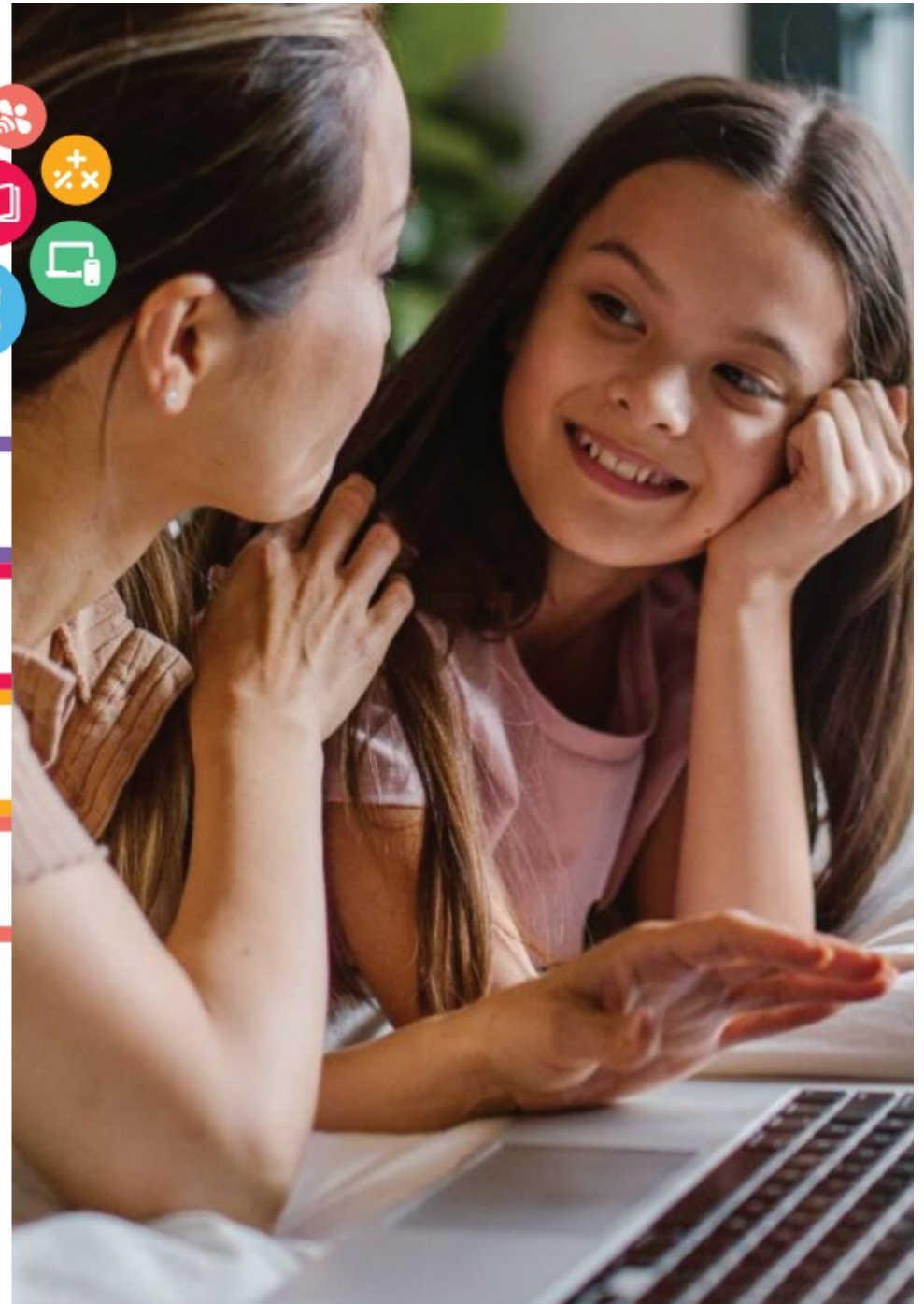
using your credit or debit card. This is the most secure way to pay.

What happens next?

Your child's school will run ICAS from here. In the meantime, you can purchase practice materials from the ICAS Assessments shop <https://www.icasassessments.com/shop-parents/>

Your school will notify you when online results are ready and will send the certificate home with your child.

ICAS
assessments





Graffiti

ART
WORKSHOP

with Mr Jepsen

Wednesday 5th June

All ages welcome

\$40 per child

3:30pm - 5pm

Live spray painting demonstration

Workshop exploring techniques

**Each child will take home their
very own completed A3 galaxy painting.**

Email LittleEsjay@gmail.com for bookings

Please Note: Younger children struggle to use the spray cans and will receive support, but choose their own colours, composition and apply the textures.

Waipa Animal Control

Waipa animal control have asked us to reach out to our community who might be considering adding a dog to their family.

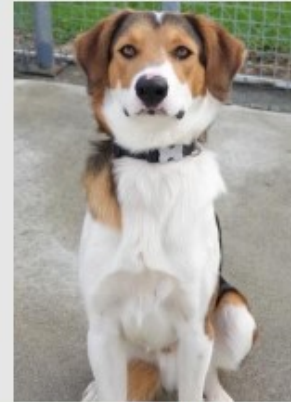
If you are interested in getting a forever pet please look through their Facebook page as well.

All dogs must be rehomed to securely fenced properties, and new owners must be prepared to register and micro-chip the dog, and also to vaccinate and desex (if not already desexed).

<https://www.facebook.com/WaipAnimalControl/>

Urgent Dog Rescue

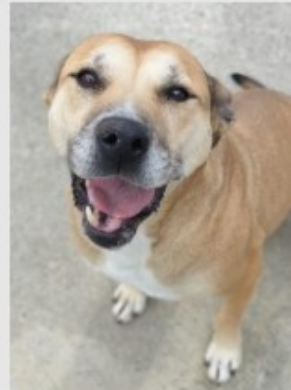
Help! Please ... can you give a dog a home? All here are in urgent need of a home.



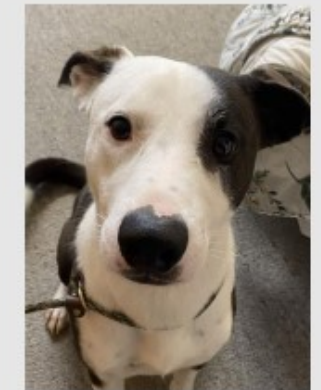
Introducing "Hank": Huntaway x, Long legs, athletic, smart, fast, super-social. Would love a doggy sister to play with and day-time company. Could you keep up with Hank?



Introducing "Martin": Huntaway x pup, approx 4-5 months male. Quiet, fun, bouncy. Bad start to life, now needs some good things.



Introducing "Meg": Mixed breed, mature, female. Lovely nature. Needs a kind owner.



Introducing "Moss": Heading Dog x, young male. Smart, biddable, sensitive. Needs daily exercise, training and fun.

For more information, or if you can offer any of these beautiful dogs a forever home, please contact:

Helen M or Linda
0800 924 723, mobile 027 584 7073 or
aco@waipadc.govt.nz

New owners must be prepared to register, micro-chip, vaccinate and desex the dog. And property must be fenced to dog-proof standard.

You can't change the world by adopting an animal, but you can change the whole world for that animal.

The School Fundraising shop has a range of New Zealand made products. If you shop with them nominate our school we will receive a 10% donation.

<https://www.schoolfundraisingshop.org.nz/>



Shop with us!

school fundraising shop



10% is
Donated to
Rukuhia
School

Paying it Forward,
Together!

www.schoolfundraisingshop.org.nz

School Reminders

School Times

8.30am	Classrooms Open
9.00am	School Starts
11.00-11.30am	Morning Tea
12.45-1.40pm	Lunch
3.00pm	School Finishes

Office Hours

8.30am—3.00pm
office@rukuhia.school.nz
07 843 6967

Absentees

If your child is going to be absent from school for any reason, could you please call or email the office before 9.00am. If the phone is unattended please leave a message.

Signing In & Out

If you are late for school or need to take your children out of school for any reason during school time, **parents/caregivers must** come into the office and sign them out and then sign them back in if they are returning before school finishes.

School Bank Account

If you are wanting to make online payments to the school below are our bank account details:

12 3152 0019783 00

Please make sure you note the child's name and what the payment is for.

The logo for Rukuhia School is a stylized green shape with a black outline, resembling a leaf or a banner, set against a light blue background with green hills. The text "RUKUHIA SCHOOL" is written in white, bold, uppercase letters across the green shape.

RUKUHIA SCHOOL

Uniform Supplier

Logo U2 are now able to offer your school uniform to be ordered directly from their online shop

www.logou2.com

- A note from Logo U2: Please wash our shirts inside out. When printed apparel is turned inside out when washing the printing will last longer as it is not getting rubbed against other clothing.

Logo U2
Proudly NZ

